
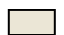














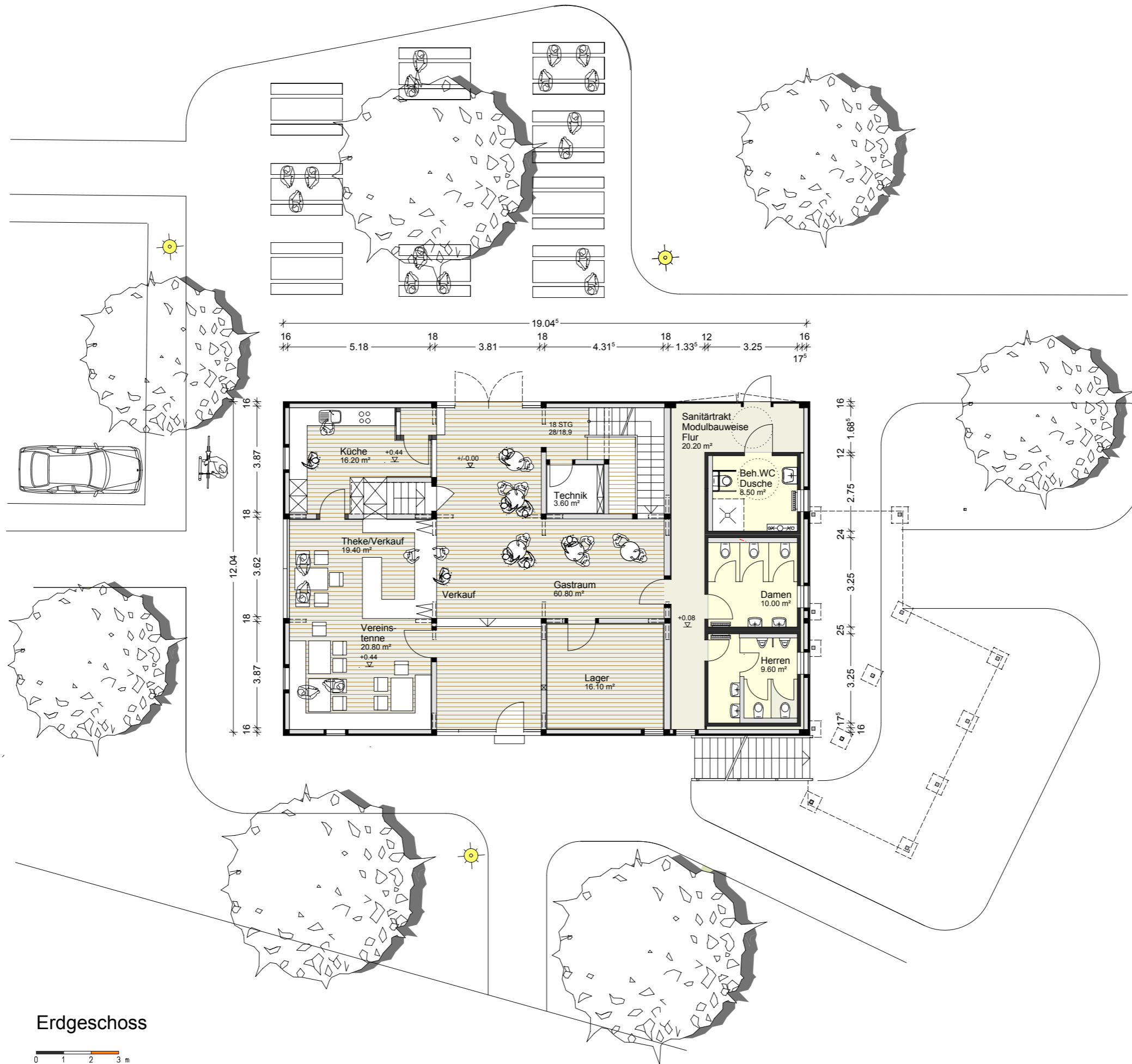


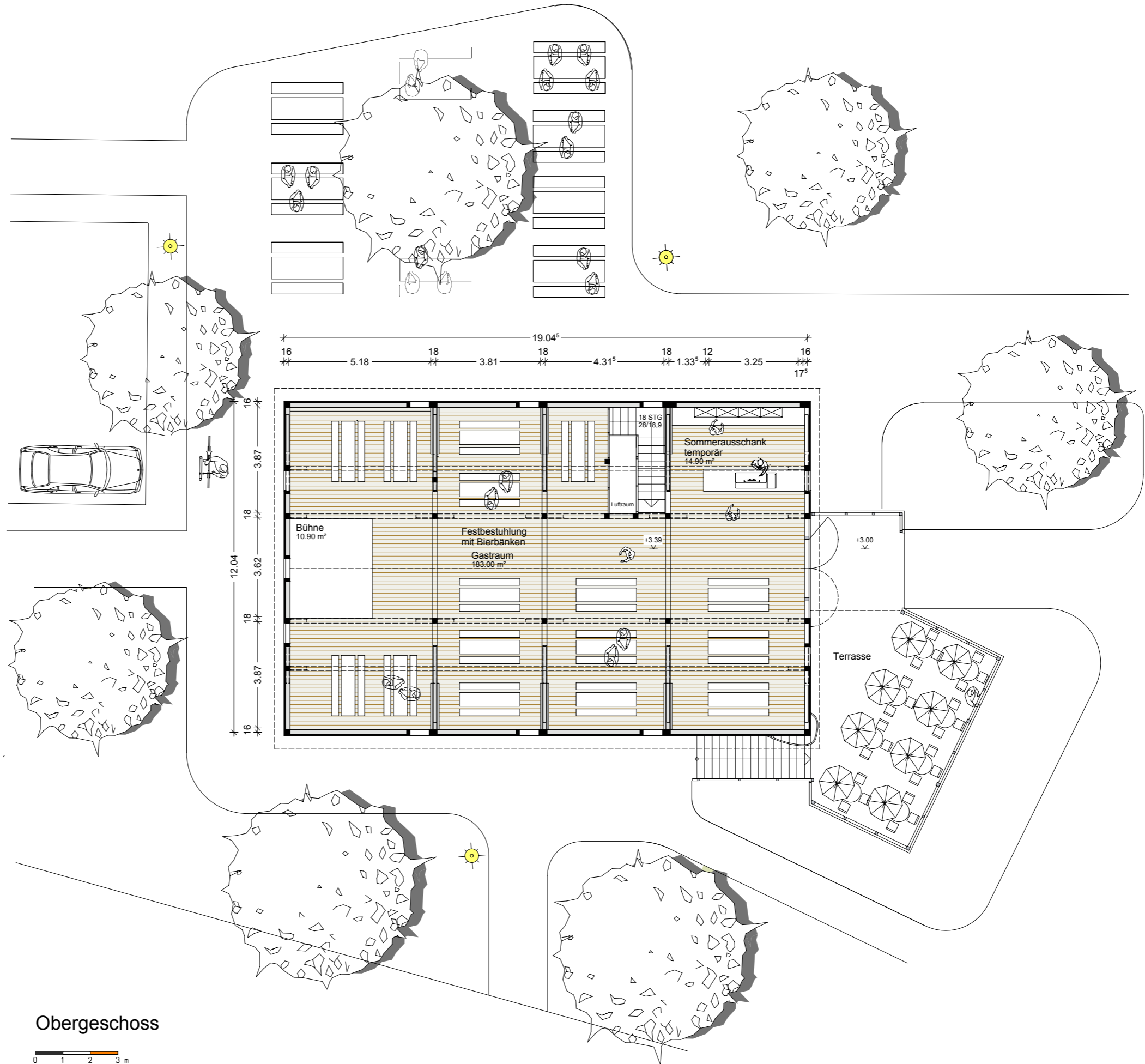
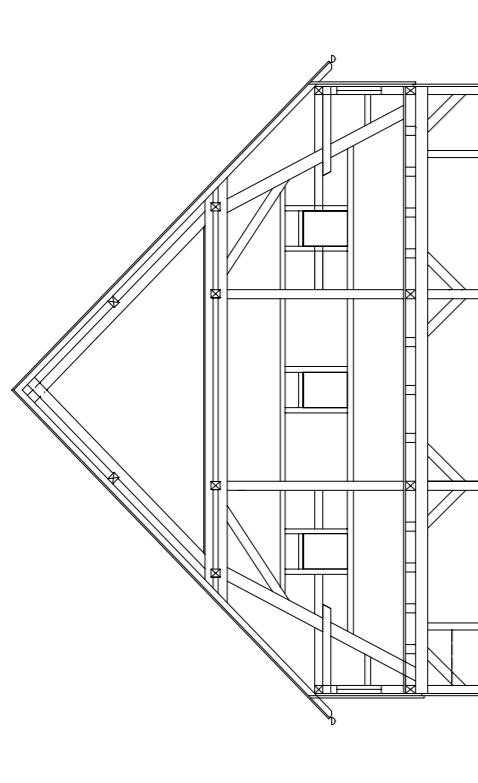


- LEGENDE**
-  Straßenfläche - Asphalt Bestand
  -  Fuß- und Radwege - wassergebundene Deckschicht
  -  Flächen für Stellplätze - wassergebundene Deckschicht
  -  Grünflächen
  -  Wiese, z.T. mit Stauden, Sträuchern bepflanzt
  -  Bewaldeter Steilhang
  -  Bäume Bestand
  -  Bäume neu
  -  Bebauung Maßnahmen, Scheune und Schäferwagen  
einfache Hütten | Backhaus
  -  Schattenwurf Gebäude
  -  Gebäude Bestand
  -  gepl. Beleuchtung
  -  Abfallbehälter
  -  Absperrpoller
  -  Fahrradbügel
  -  E- Bike Ladestation

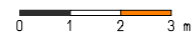
N  
  
 Lageplan



Dachschnitt



Obergeschoss





Ansicht Nord

0 1 2 3 m

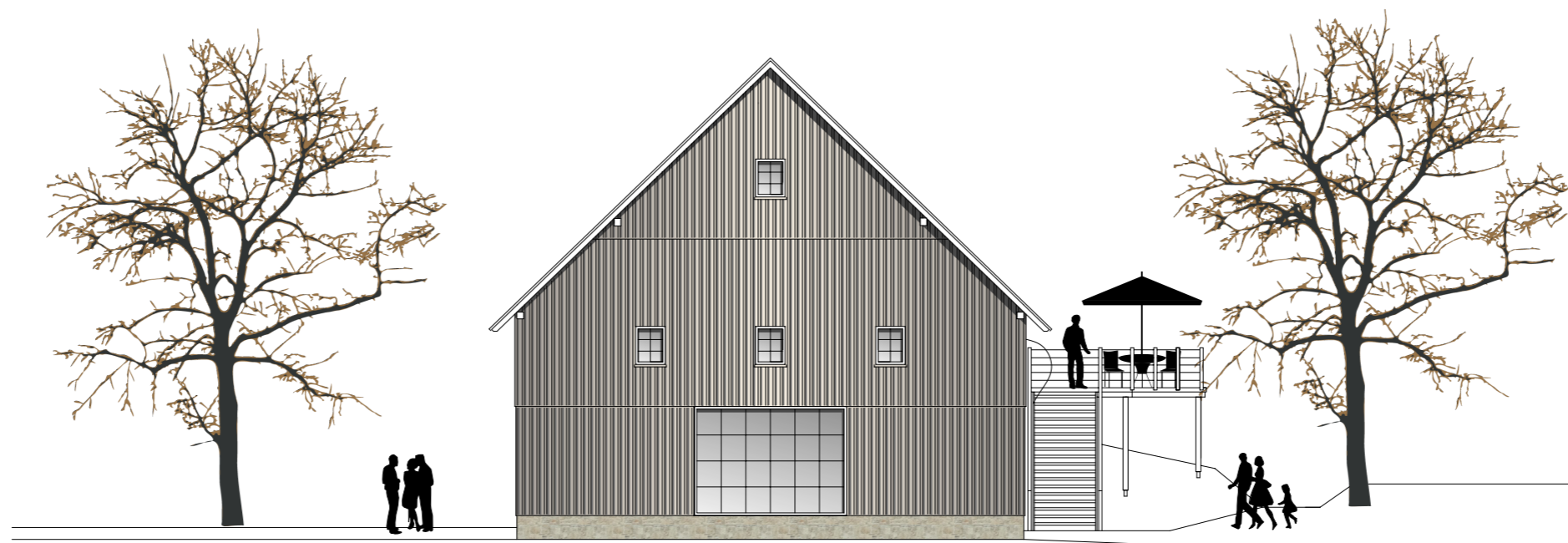
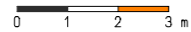


Ansicht Süd

0 1 2 3 m



Ansicht Ost



Ansicht West







WC/Dusche

Absperripoller

Natur- und Abenteuerspielplatz

Liegewiese

Sitzen

Infopoint

1103/3

Abbruch



Steinbacher V

Naturpfad

Natur- und Abenteuerspielplatz

Absperrpoller

Liegewiese

Sitzen



